



## THE NASSAU at SEVEN PINES

THE NASSAU - TRANSITIONAL

MOVE IN READY

**3 Bedrooms • 2 Bathrooms • 2-Car Garage • 1,603 ft<sup>2</sup> Living Area • 2,307 ft<sup>2</sup> Under Roof**

The Nassau floor plan is a charming 1,603-square-foot home with three bedrooms and two baths, designed for comfortable, open-concept living. Step into a flexible space near the entry that's perfect as an office or guest nook, followed by the main living area where the kitchen, dining, and living room flow together effortlessly. Enjoy the covered lanai accessible from the living room, ideal for outdoor relaxation. The private master suite includes a spacious walk-in closet and an en-suite bath with dual vanities. With options for personalized upgrades, the Nassau floor plan lets you create a space that feels uniquely yours.

\* Renderings may vary from actual home. Please see disclaimer for more details.

# \$935

ESTIMATED SAVINGS



This home has a HERS Score of 59 and is estimated to save you \$2,019 on your annual utility bills vs. a resale home.

# THE NASSAU

3 Bedrooms • 2 Bathrooms • 2-Car Garage

MOVE IN READY

## Seven Pines

Heritage Series | 40' Wide Lots | Rear Load - Lot 003

12188 Grand Pine Drive  
Jacksonville, FL, 32224

Living Area: 1,603 ft<sup>2</sup>

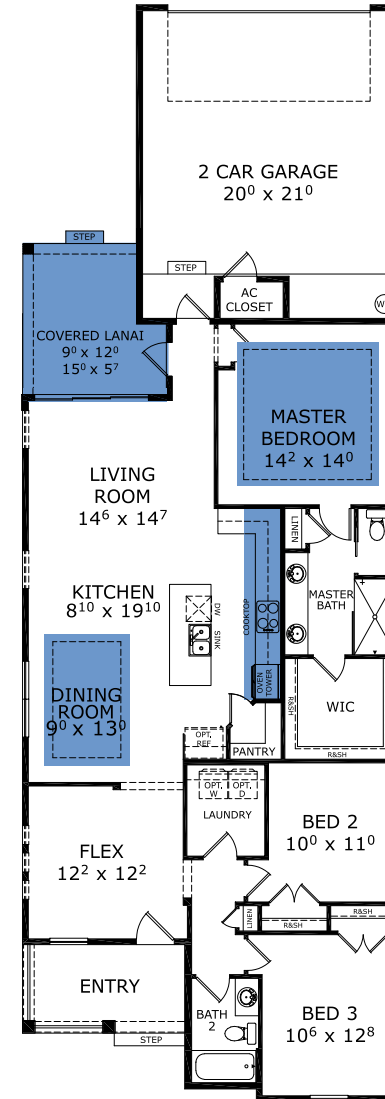
### Structural Options Included in This Home:

- ✓ Kitchen Deluxe - NFD
- ✓ Extended Covered Lanai
- ✓ Summer Kitchen-Knee Wall Only per LF
- ✓ Sliding Glass Door 9 x 8
- ✓ Tray Ceiling - Dining
- ✓ Tray Ceiling - Living Room
- ✓ Tray Ceiling - Master Suite
- ✓ Outlet-Floor Plug Brass
- ✓ CLARIFICATION: Do not install luggage shelf at Master WIC
- ✓ CLARIFICATION: Flex Built-In removed, but wall bump to remain.

And much more....

**Priced at: \$650,000**

## FIRST FLOOR



This Nassau is a Move In Ready! [Speak to a Sales Counselor \(844\) 349-6401](https://www.icihomes.com) or visit [ICIHomes.com](https://www.icihomes.com)

©1994-2026 ICI Homes™ is a registered trademark whose divisions operate under CBC1267313, CBC1262114, CBC1262120, CBC1264300, CBC1265743, CRC1333091, and CBC1257263. Features may be plan specific and vary. Please consult a Sales Associate for specific feature information. All new ICI Homes come with a HBW 2-10 warranty. Certain elevations may have additional fees. Prices may not include lot premiums, upgrades, and options. Inventory home completion date may vary. All prices subject to change without notice. All plans are property of ICI Homes and cannot be copied or used without permission. Prices, promotions, incentives, features, options, amenities, floor plans, elevations, site maps, designs, materials, and dimensions are for illustrative purposes only and subject to change without notice. Plans should not be relied upon as representation express or implied of final sizes, locations, features or dimensions. Square footage and dimensions are estimated and may vary from description. All HERS ratings and savings are calculated by a third party energy rating service. Actual savings will depend on a number of factors, including but not limited to daily activities, home maintenance practices, household size, use of appliances, lighting and internal climate control systems, lot orientation, and surrounding climate and weather conditions. Created on 04/05/2026: \_\_\_\_\_ Garage Orientation R / L: \_\_\_\_\_

