



THE MARSEILLE at BROWNS LANDING

THE COASTAL MODERN

4 Bedrooms • 4 Bathrooms • 4-Car Garage • 4,217 ft² Living Area • 5,955 ft² Under Roof

The Marseille is a spacious one-story home offering over 4,200 square feet with 4 bedrooms, 4.5 baths, a study, game room, and a 4-car garage—designed for elevated everyday living.

* Renderings may vary from actual home. Please see disclaimer for more details.

\$1,792

ESTIMATED SAVINGS



This home has a HERS Score of 68 and is estimated to save you \$3,955 on your annual utility bills vs. a resale home.

THE MARSEILLE

4 Bedrooms • 4 Bathrooms • 4-Car Garage

Browns Landing Available In
Port Orange, FL Estates at Browns Landing

Living Area: 4,217 ft² Under Roof: 5,955 ft²

THE PRAIRIE MODERN - TILE



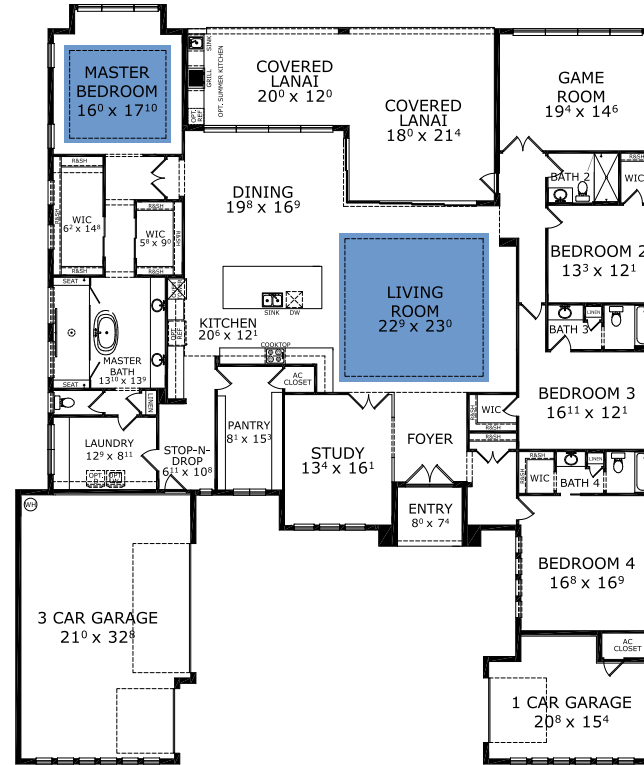
THE WEST INDIES - TILE



THE MODERN - TILE



FIRST FLOOR



Customize this plan, it's easy! (844) 349-6401 or visit [ICIHomes.com](https://www.ICIHomes.com)

©1994-2026 ICI Homes™ is a registered trademark whose divisions operate under CBC1267313, CBC1262114, CBC1262120, CBC1264300, CBC1265743, CRC1333091, and CBC1257263. Features may be plan specific and vary. Please consult a Sales Associate for specific feature information. All new ICI Homes come with a HBW 2-10 warranty. Certain elevations may have additional fees. Prices may not include lot premiums, upgrades, and options. Inventory home completion date may vary. All prices subject to change without notice. All plans are property of ICI Homes and cannot be copied or used without permission. Prices, promotions, incentives, features, options, amenities, floor plans, elevations, site maps, designs, materials, and dimensions are for illustrative purposes only and subject to change without notice. Plans should not be relied upon as representation express or implied of final sizes, locations, features or dimensions. Square footage and dimensions are estimated and may vary from description. All HERS ratings and savings are calculated by a third party energy rating service. Actual savings will depend on a number of factors, including but not limited to daily activities, home maintenance practices, household size, use of appliances, lighting and internal climate control systems, lot orientation, and surrounding climate and weather conditions. Created on 04/28/2026: _____ Garage Orientation R / L: _____

