



## THE MAYPORT at SEVEN PINES

THE MAYPORT - CRAFTSMAN

READY SOON

**4 Bedrooms • 3 Bathrooms • 3-Car Garage • 2,502 ft<sup>2</sup> Living Area • 3,793 ft<sup>2</sup> Under Roof**

The Mayport floor plan is a perfect blend of style and functionality in a spacious single-story layout. With 2,470 square feet, this home features an open-concept living area, a well-appointed kitchen with a butler's pantry, and a private master suite with a spa-like bath and walk-in closet. Three additional bedrooms provide comfort for family or guests, while a covered lanai and detached 3-car garage with a breezeway add extra charm and convenience. With ICI Homes' ability to customize, the Mayport can be tailored to fit your lifestyle, making it a home as unique as you are.

\* Renderings may vary from actual home. Please see disclaimer for more details.

**\$1,242**

**ESTIMATED SAVINGS**



This home has a HERS Score of 59 and is estimated to save you \$2,608 on your annual utility bills vs. a resale home.

# THE MAYPORT

4 Bedrooms • 3 Bathrooms • 3-Car Garage

READY SOON

## Seven Pines

Elite Series | 60' Wide Lots | Rear Load - Lot 216

5543 Woodgate Avenue  
Jacksonville, FL, 32224

Living Area: 2,502 ft<sup>2</sup>

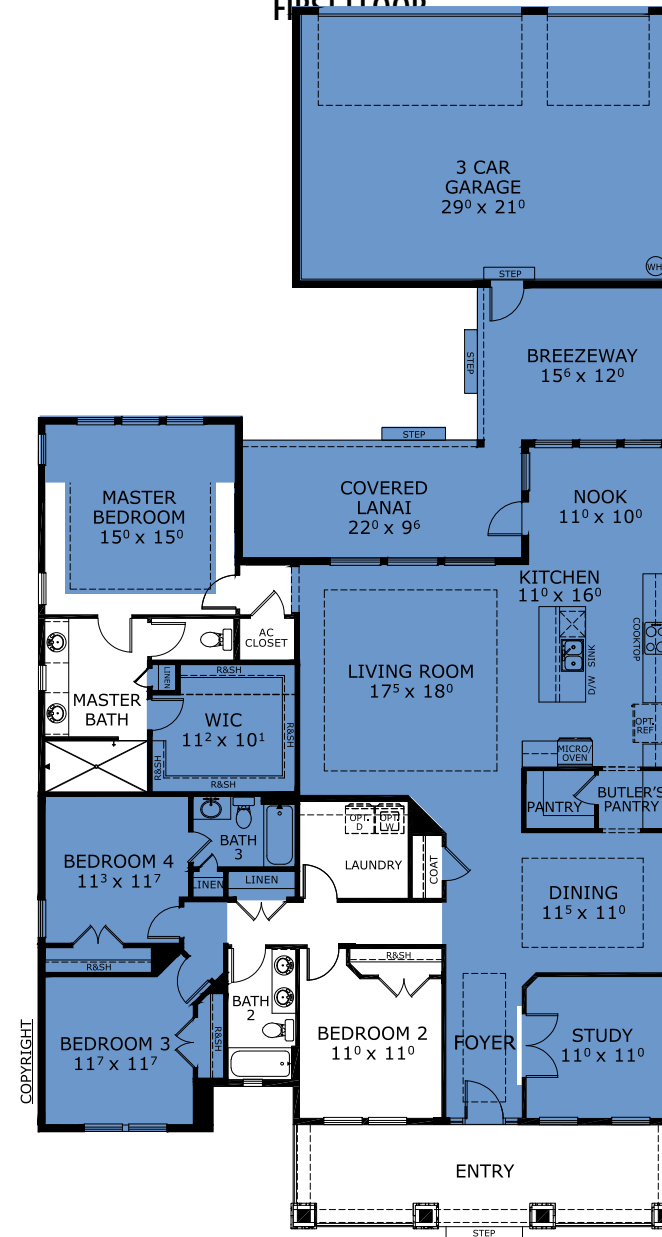
### Structural Options Included in This Home:

- ✓ Bedroom #4 W/ Full Bath
- ✓ Garage 3 Car Detached W/ Covered Breezeway
- ✓ Shower ilo Guest Tub @ Bath Alt
- ✓ Kitchen Deluxe - NFD
- ✓ Study ilo Flex Room
- ✓ Ceiling 12 @ Kitchen/Living/Dining
- ✓ Tray Ceiling - Dining
- ✓ Tray Ceiling - Foyer
- ✓ Tray Ceiling - Living Room
- ✓ Tray Ceiling - Master Suite
- ✓ Outlet-Floor Plug Brass
- ✓ Delete Luggage Shelf Master WIC
- ✓ 6 Knee Wall Lanai.

And much more....

**Priced at: \$965,598**

FIRST FLOOR



This Mayport is a Ready Soon! [Speak to a Sales Counselor \(844\) 349-6401](https://www.icihomes.com) or visit [ICIHomes.com](https://www.icihomes.com)

©1994-2026 ICI Homes™ is a registered trademark whose divisions operate under CBC1267313, CBC1262114, CBC1262120, CBC1264300, CBC1265743, CRC1333091, and CBC1257263. Features may be plan specific and vary. Please consult a Sales Associate for specific feature information. All new ICI Homes come with a HBW 2-10 warranty. Certain elevations may have additional fees. Prices may not include lot premiums, upgrades, and options. Inventory home completion date may vary. All prices subject to change without notice. All plans are property of ICI Homes and cannot be copied or used without permission. Prices, promotions, incentives, features, options, amenities, floor plans, elevations, site maps, designs, materials, and dimensions are for illustrative purposes only and subject to change without notice. Plans should not be relied upon as representation express or implied of final sizes, locations, features or dimensions. Square footage and dimensions are estimated and may vary from description. All HERS ratings and savings are calculated by a third party energy rating service. Actual savings will depend on a number of factors, including but not limited to daily activities, home maintenance practices, household size, use of appliances, lighting and internal climate control systems, lot orientation, and surrounding climate and weather conditions. Created on 04/29/2026: Garage Orientation R / L:

