



## THE LAGUNA at OAKMONT

THE LAGUNA - CRAFTSMAN

**3 Bedrooms • 2 Bathrooms • 2-Car Garage • 1,596 ft<sup>2</sup> Living Area • 2,052 ft<sup>2</sup> Under Roof**

The Laguna floor plan offers a cozy, single-level layout with 1,596 square feet of smartly designed space. Enter through a welcoming gallery that leads to an open-concept living area, perfect for family gatherings or quiet relaxation. The extended dining room and covered lanai provide ideal spots for entertaining or enjoying Florida's breezes. The master suite, with a spacious walk-in closet and dual-sink bathroom, offers a private retreat. With two additional bedrooms, this home is perfect for families. Customize it with ICI Homes' upgrades to create a space that truly reflects your style and needs.

\* Renderings may vary from actual home. Please see disclaimer for more details.

# \$783

ESTIMATED SAVINGS



This home has a HERS Score of 64 and is estimated to save you \$1,753 on your annual utility bills vs. a resale home.

# THE LAGUNA

3 Bedrooms • 2 Bathrooms • 2-Car Garage

Oakmont  
Gainesville, FL

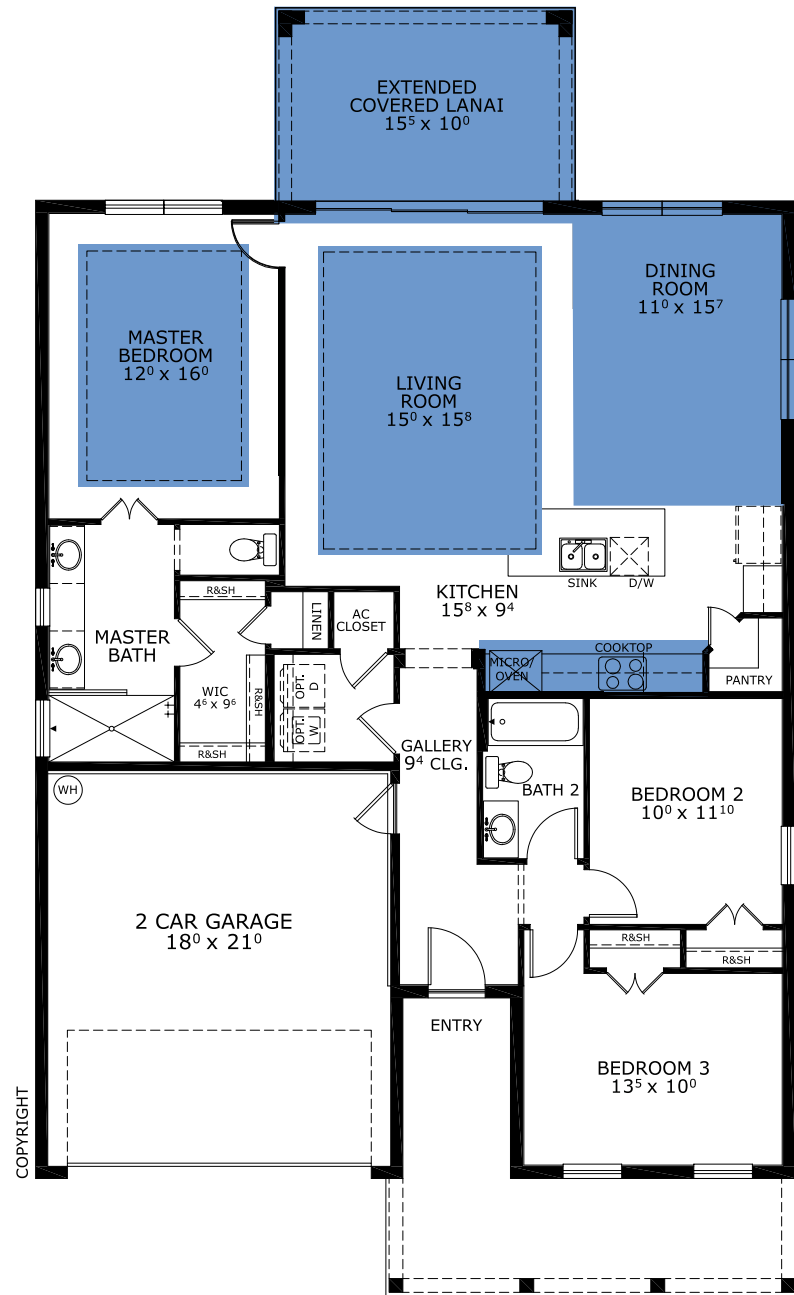
Available In  
Oakmont 50

Living Area: 1,596 ft<sup>2</sup> Under Roof: 2,052 ft<sup>2</sup>

## THE VERNACULAR



## THE TRANSITIONAL



Customize this plan, it's easy! (844) 349-6401 or visit [ICIHomes.com](https://www.ICIHomes.com)

©1994-2026 ICI Homes™ is a registered trademark whose divisions operate under CBC1267313, CBC1262114, CBC1262120, CBC1264300, CBC1265743, CRC1333091, and CBC1257263. Features may be plan specific and vary. Please consult a Sales Associate for specific feature information. All new ICI Homes come with a HBW 2-10 warranty. Certain elevations may have additional fees. Prices may not include lot premiums, upgrades, and options. Inventory home completion date may vary. All prices subject to change without notice. All plans are property of ICI Homes and cannot be copied or used without permission. Prices, promotions, incentives, features, options, amenities, floor plans, elevations, site maps, designs, materials, and dimensions are for illustrative purposes only and subject to change without notice. Plans should not be relied upon as representation express or implied of final sizes, locations, features or dimensions. Square footage and dimensions are estimated and may vary from description. All HERS ratings and savings are calculated by a third party energy rating service. Actual savings will depend on a number of factors, including but not limited to daily activities, home maintenance practices, household size, use of appliances, lighting and internal climate control systems, lot orientation, and surrounding climate and weather conditions. Created on 04/05/2026: Garage Orientation R / L: \_\_\_\_\_

