



THE BROOKE at WOODHAVEN

THE BROOKE - COASTAL

5 Bedrooms • 3.5 Bathrooms • 3-Car Garage • 3,610 ft² Living Area • 4,612 ft² Under Roof

The Brooke is a 3,610 sq. ft. home with 5 bedrooms, 3.5 baths, and a three-car garage. The open layout features a gourmet kitchen with a large island, an adjacent dining nook, and a spacious living room that opens to a covered lanai. The main-floor master suite is a private retreat with dual walk-in closets and a spa-inspired bathroom. Upstairs, four additional bedrooms surround a large game room, providing flexible space for family or guests. With ICI Homes' customization options, the Brooke can be tailored to fit your lifestyle, making it a home that's truly yours.

* Renderings may vary from actual home. Please see disclaimer for more details.

\$1,777

ESTIMATED SAVINGS



This home has a HERS Score of 59 and is estimated to save you \$3,374 on your annual utility bills vs. a resale home.

THE BROOKE

5 Bedrooms • 3.5 Bathrooms • 3-Car Garage

Woodhaven
Port Orange, FL

Available In
Woodhaven 70

Living Area: 3,610 ft² **Under Roof:** 4,612 ft²

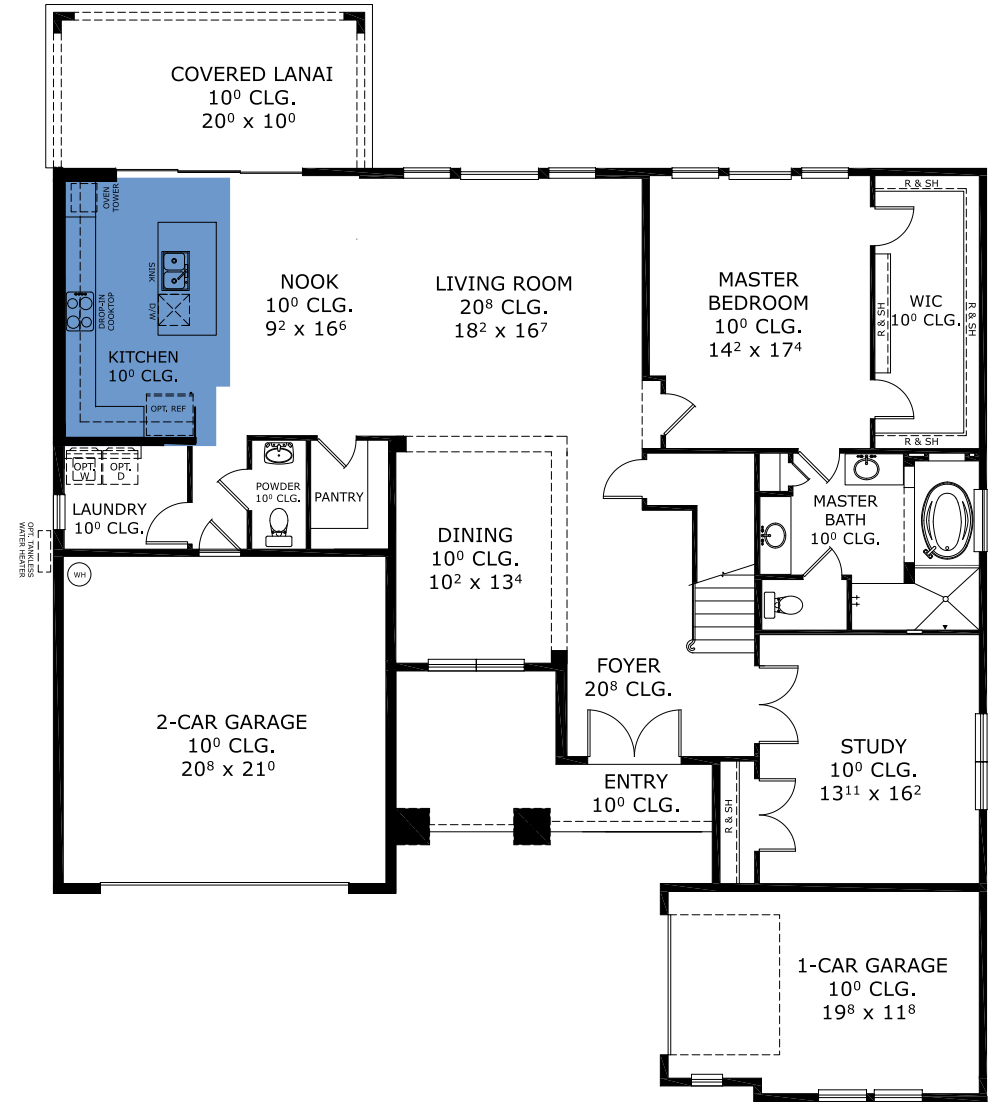
THE CRAFTSMAN



THE CARIBBEAN - CR



FIRST FLOOR



Customize this plan, it's easy! (844) 349-6401 or visit ICIHomes.com

©1994-2026 ICI Homes™ is a registered trademark whose divisions operate under CBC1267313, CBC1262114, CBC1262120, CBC1264300, CBC1265743, CRC1333091, and CBC1257263. Features may be plan specific and vary. Please consult a Sales Associate for specific feature information. All new ICI Homes come with a HBW 2-10 warranty. Certain elevations may have additional fees. Prices may not include lot premiums, upgrades, and options. Inventory home completion date may vary. All prices subject to change without notice. All plans are property of ICI Homes and cannot be copied or used without permission. Prices, promotions, incentives, features, options, amenities, floor plans, elevations, site maps, designs, materials, and dimensions are for illustrative purposes only and subject to change without notice. Plans should not be relied upon as representation express or implied of final sizes, locations, features or dimensions. Square footage and dimensions are estimated and may vary from description. All HERS ratings and savings are calculated by a third party energy rating service. Actual savings will depend on a number of factors, including but not limited to daily activities, home maintenance practices, household size, use of appliances, lighting and internal climate control systems, lot orientation, and surrounding climate and weather conditions. Created on 04/07/2026: _____ Garage Orientation R / L: _____



THE BROOKE

5 Bedrooms • 3.5 Bathrooms • 3-Car Garage

Woodhaven
Port Orange, FL

Available In
Woodhaven 70

Living Area: 3,610 ft² Under Roof: 4,612 ft²

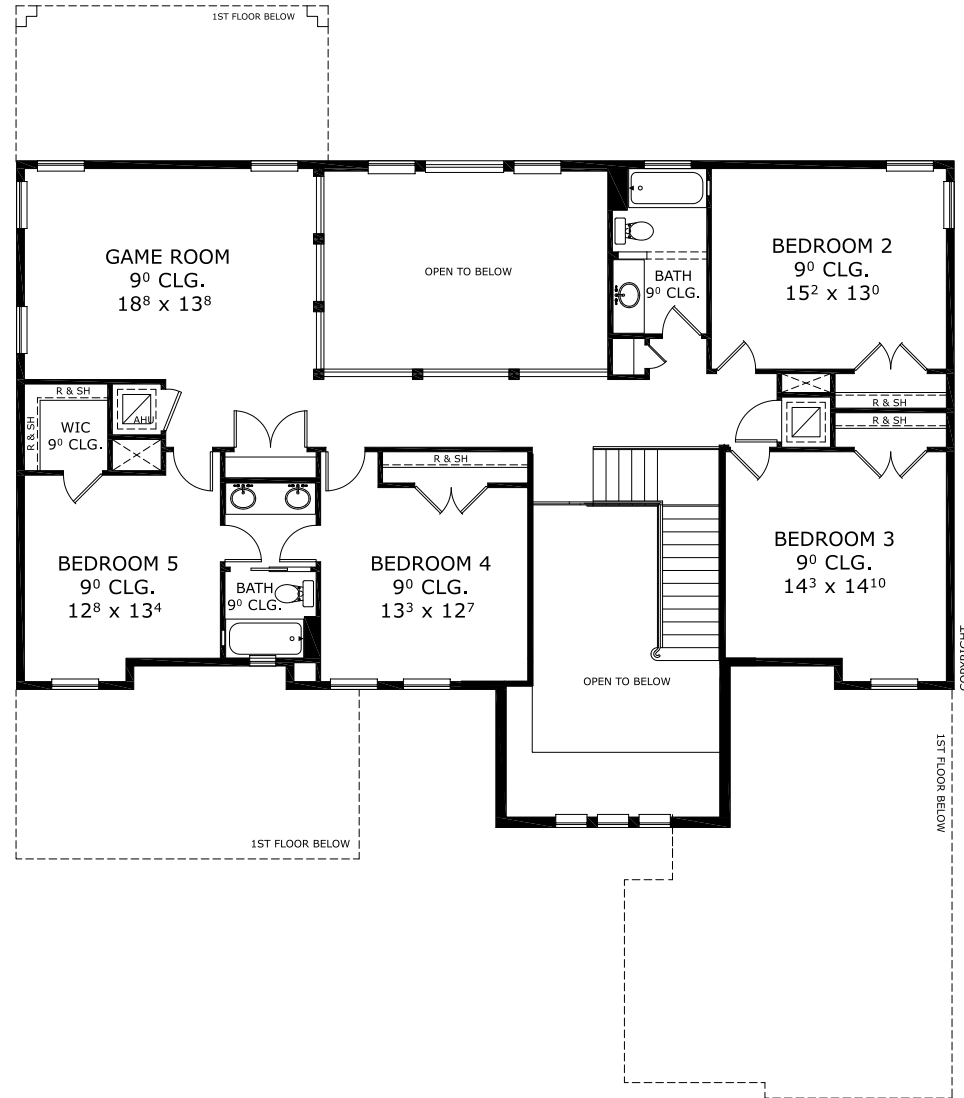
THE CRAFTSMAN



THE CARIBBEAN - CR



SECOND FLOOR



Customize this plan, it's easy! (844) 349-6401 or visit [ICIHomes.com](https://www.ICIHomes.com)

©1994-2026 ICI Homes™ is a registered trademark whose divisions operate under CBC1267313, CBC1262114, CBC1262120, CBC1264300, CBC1265743, CRC1333091, and CBC1257263. Features may be plan specific and vary. Please consult a Sales Associate for specific feature information. All new ICI Homes come with a HBW 2-10 warranty. Certain elevations may have additional fees. Prices may not include lot premiums, upgrades, and options. Inventory home completion date may vary. All prices subject to change without notice. All plans are property of ICI Homes and cannot be copied or used without permission. Prices, promotions, incentives, features, options, amenities, floor plans, elevations, site maps, designs, materials, and dimensions are for illustrative purposes only and subject to change without notice. Plans should not be relied upon as representation express or implied of final sizes, locations, features or dimensions. Square footage and dimensions are estimated and may vary from description. All HERS ratings and savings are calculated by a third party energy rating service. Actual savings will depend on a number of factors, including but not limited to daily activities, home maintenance practices, household size, use of appliances, lighting and internal climate control systems, lot orientation, and surrounding climate and weather conditions. Created on 04/07/2026: _____ Garage Orientation R / L: _____

