



THE ARCADIA at VOLUSIA/FLAGLER OFFSITE

THE COASTAL

4 Bedrooms • 3 Bathrooms • 2-Car Garage • 2,843 ft² Living Area • 3,797 ft² Under Roof

The Arcadia is a two-story home with 4 bedrooms, 3 baths, and a game room—featuring a large entry porch and extended lanai for easy everyday living.

* Renderings may vary from actual home. Please see disclaimer for more details.

\$1,430

ESTIMATED SAVINGS



This home has a HERS Score of 64 and is estimated to save you \$3,011 on your annual utility bills vs. a resale home.

THE ARCADIA

4 Bedrooms • 3 Bathrooms • 2-Car Garage

Volusia/Flagler

Offsite

Available In

Ormond Beach, FL

Volusia Flagler On Your Lot

Living Area: 2,843 ft² Under Roof: 3,797 ft²

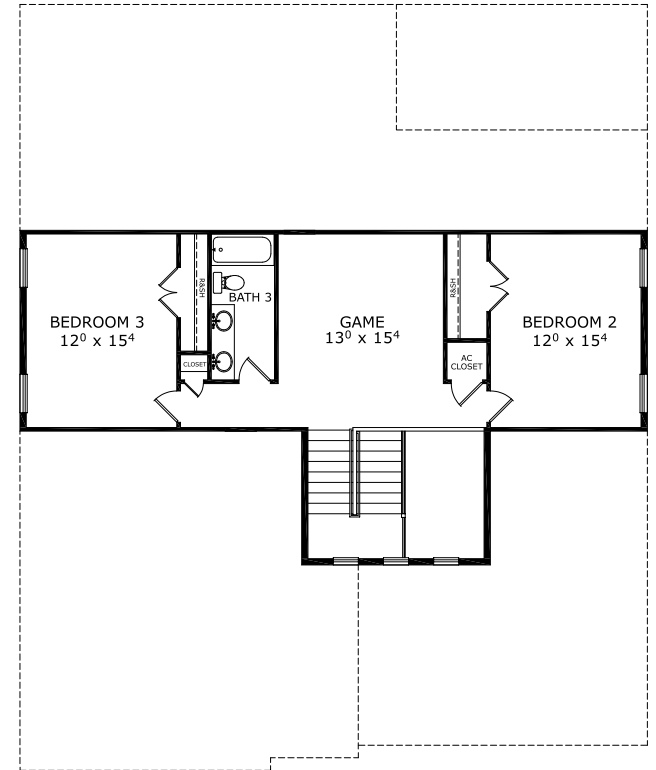
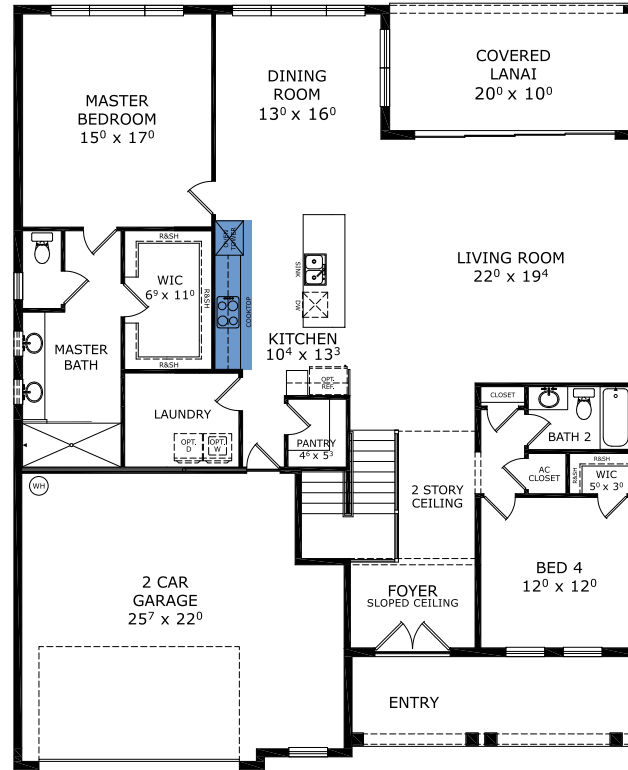
THE WEST INDIES



THE PRAIRIE



FIRST-SECOND FLOOR



Customize this plan, it's easy! (844) 349-6401 or visit [ICIHomes.com](https://www.ICIHomes.com)

©1994-2026 ICI Homes™ is a registered trademark whose divisions operate under CBC1267313, CBC1262114, CBC1262120, CBC1264300, CBC1265743, CRC1333091, and CBC1257263. Features may be plan specific and vary. Please consult a Sales Associate for specific feature information. All new ICI Homes come with a HBW 2-10 warranty. Certain elevations may have additional fees. Prices may not include lot premiums, upgrades, and options. Inventory home completion date may vary. All prices subject to change without notice. All plans are property of ICI Homes and cannot be copied or used without permission. Prices, promotions, incentives, features, options, amenities, floor plans, elevations, site maps, designs, materials, and dimensions are for illustrative purposes only and subject to change without notice. Plans should not be relied upon as representation express or implied of final sizes, locations, features or dimensions. Square footage and dimensions are estimated and may vary from description. All HERS ratings and savings are calculated by a third party energy rating service. Actual savings will depend on a number of factors, including but not limited to daily activities, home maintenance practices, household size, use of appliances, lighting and internal climate control systems, lot orientation, and surrounding climate and weather conditions. Created on 04/05/2026: _____ Garage Orientation R / L: _____

